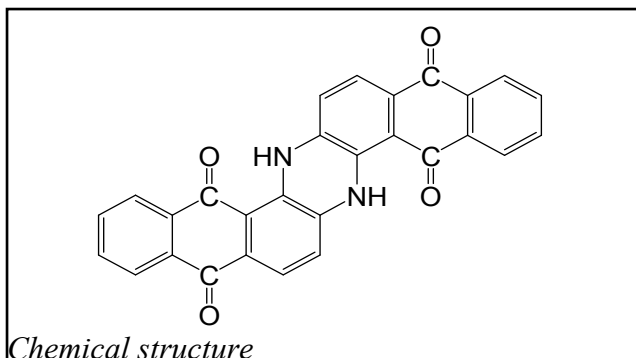


LIONOGEN BLUE 6520



Chemical Group :	Indanthrone
Colour Index :	PB60
C.I. Number :	69800
CAS Number :	81-77-6
EC Number :	201-375-5

Registration

MITI (Japan)	5-3311
TSCA (USA)	Registered

Application

Automotive solvent	⊙
Automotive water	○
Industrial solvent	⊙
Decorative solvent	⊙
Decorative water	○
Powder coatings	

⊙ Recommended ○ Suitable

Note : The information herein and materials supplied to user is based on our general experience and where applicable, on the results of tests of typical manufacture. However, because of many factors which are outside our knowledge and control which can affect the use of these products, we decline liability for any injury, loss or damage resulting from reliance upon such information.

Colour Chart



Key Properties

An outstanding bright and reddish, transparent and strong indanthrone blue pigment, with good rheological properties, designed for high quality paints such as automotive applications, specially pearlescent and metallic shades.

Physical Properties

Bulk density (Kg/l)
Specific surface area (m²/g)

Fastness Properties

Chemical Resistance

Water	5
Xylene	5
Ethanol	5
Ethyl Acetate	5
Acid (HCl 2%)	5
Mineral Spirit	5
Alkali (NaOH 2%)	5

resistance to solvent, acid & alkali: 1 to 5, 5 = Excellent

Light Fastness

Full shade	8
Reduced -1/10TiO ₂	7

assessment according to the Wool Scale (1-8)

Weatherability

Solid	Full	dE=
	1/10TiO ₂	dE=
Metallics		dE=
		dE=

Heat Stability

10' - 150 °C	5
10' - 210 °C	5

assessment according to the Gray Scale (1-5)

TOYOCOLOR CO., LTD.

Kyobashi EDOGRAND Bldg., 2-1, Kyobashi 2-chome, Chuo-ku, Tokyo, 104-8381
JAPAN Tel +81 3 3272 3443 Fax +81 3 3272 3447 www.toyo-color.com

TOYOCOLOR

For a Vibrant World

TOYO IN < GROUP