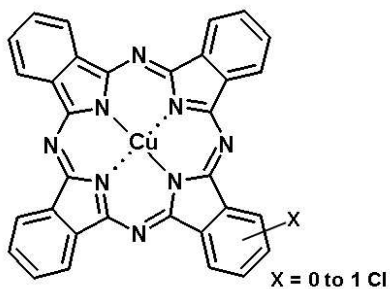


LIONOL BLUE 7125-V



Chemical structure

Chemical Group :	Phthalocyanine
Colour Index :	PB15:1
C.I. Number :	74160
CAS Number :	147-14-8
EC Number :	205-685-1

Registration

MITI (Japan)	5-3300
TSCA (USA)	Registered

Application

Rubber	○
PVC	◎
LDPE	◎
HDPE / PP	◎
PS / PC / ABS	◎
Fiber	

◎ Recommended ○ Suitable

Note : The information herein and materials supplied to user is based on our general experience and where applicable, on the results of tests of typical manufacture. However, because of many factors which are outside our knowledge and control which can affect the use of these products, we decline liability for any injury, loss or damage resulting from reliance upon such information.

Colour Chart



Key Properties

An alpha form phthalocyanine blue pigment with high colour strength, good dispersibility, and excellent heat resistance.

Physical Properties

Bulk density (Kg/l)	0.11
Specific surface area (m ² /g)	73

Fastness Properties

Chemical Resistance

Water	
Xylene	5
Ethanol	5
Ethyl Acetate	5
Mineral Spirit	5
Acid (HCl 2%)	5
Alkali (NaOH 2%)	5

Resistance to Solvent: 1 to 5, 5 = Excellent
Acid & Alkali Resistance: 1 to 5, 5 = Excellent

Light Fastness

Full shade	8
Reduced -1/10TiO ₂	8

assessment according to the Wool Scale (1-8)

Heat Resistance

280 °C

TOYOCOLOR CO., LTD.

Kyobashi EDOGRAND Bldg., 2-1, Kyobashi 2-chome, Chuo-ku, Tokyo, 104-8381
JAPAN Tel +81 3 3272 3443 Fax +81 3 3272 3447 www.toyo-color.com

TOYO COLOR

For a Vibrant World

TOYO IN < GROUP