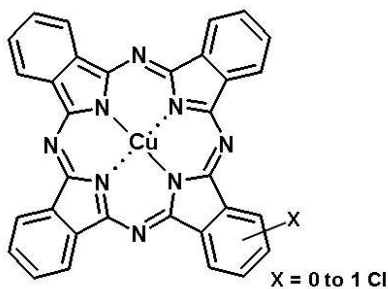


LIONOL BLUE 7186-PM



Chemical structure

| | |
|-------------------------|----------------|
| Chemical Group : | Phthalocyanine |
| Colour Index : | PB15:1 |
| C.I. Number : | 74160 |
| CAS Number : | 147-14-8 |
| EC Number : | 205-685-1 |

Registration

| | |
|--------------|------------|
| MITI (Japan) | 5-3300 |
| TSCA (USA) | Registered |

Application

| | |
|--------------------|---|
| Automotive solvent | ⊙ |
| Automotive water | ⊙ |
| Industrial solvent | ○ |
| Decorative solvent | ○ |
| Decorative water | ○ |
| Powder coatings | ○ |

⊙ Recommended ○ Suitable

Note : The information herein and materials supplied to user is based on our general experience and where applicable, on the results of tests of typical manufacture. However, because of many factors which are outside our knowledge and control which can affect the use of these products, we decline liability for any injury, loss or damage resulting from reliance upon such information.

Colour Chart



Key Properties

An alpha form phthalocyanine blue pigment with good dispersibility.

Physical Properties

Bulk density (Kg/l)
Specific surface area (m²/g)

Fastness Properties

Chemical Resistance

| | |
|------------------|---|
| Water | 5 |
| Xylene | 5 |
| Ethanol | 5 |
| Ethyl Acetate | 5 |
| Acid (HCl 2%) | 5 |
| Mineral Spirit | 5 |
| Alkali (NaOH 2%) | 5 |

resistance to solvent, acid & alkali: 1 to 5, 5 = Excellent

Light Fastness

| | |
|-------------------------------|---|
| Full shade | 8 |
| Reduced -1/10TiO ₂ | 8 |

assessment according to the Wool Scale (1-8)

Weatherability

| | | | |
|----------|-----------|----------------------|-------|
| S-UV 96h | Solid | Full | dE= |
| | | 1/10TiO ₂ | dE= |
| | Metallics | | dE=NA |
| | | | dE=NA |

Heat Stability

| | |
|--------------|---|
| 10' - 150 °C | 5 |
| 10' - 210 °C | 5 |

assessment according to the Gray Scale (1-5)

TOYOCOLOR CO., LTD.

Kyobashi EDOGRAND Bldg., 2-1, Kyobashi 2-chome, Chuo-ku, Tokyo, 104-8381
JAPAN Tel +81 3 3272 3443 Fax +81 3 3272 3447 www.toyo-color.com

TOYOCOLOR

For a Vibrant World

TOYO IN < GROUP