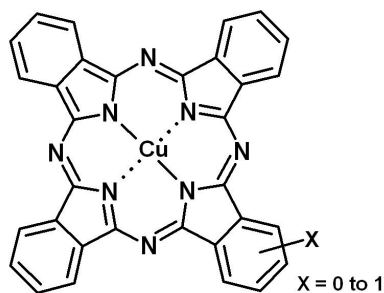


LIONOL BLUE 7255-PS



Chemical structure

Chemical Group :	Phthalocyanine
Colour Index :	PB15:2
C.I. Number :	74160
CAS Number :	147-14-8
EC Number :	205-685-1

Registration

MITI (Japan)	5-5216
TSCA (USA)	Registered

Application

Automotive solvent	◎
Automotive water	◎
Industrial solvent	◎
Decorative solvent	◎
Decorative water	◎
Powder coatings	◎

◎ Recommended ○ Suitable

Note : The information herein and materials supplied to user is based on our general experience and where applicable, on the results of tests of typical manufacture. However, because of many factors which are outside our knowledge and control which can affect the use of these products, we decline liability for any injury, loss or damage resulting from reliance upon such information.

Colour Chart



Key Properties

A modified alpha form phthalocyanine blue pigment with excellent dispersion properties, high colour strength, a very bright reddish shade and very good rheological properties.

Physical Properties

Bulk density (Kg/l)	0.20
Specific surface area (m ² /g)	67

Fastness Properties

Chemical Resistance

Water	5
Xylene	5
Ethanol	5
Ethyl Acetate	5
Acid (HCl 2%)	5
Mineral Spirit	5
Alkali (NaOH 2%)	5

resistance to solvent, acid & alkali: 1 to 5, 5 = Excellent

Light Fastness

Full shade	8
Reduced -1/10TiO ₂	8

assessment according to the Wool Scale (1-8)

Weatherability

Open Air	Solid	Full	dE=2.3
Okinawa		1/10TiO ₂	dE=2.7
2 years	Metallics	5/1Al	dE=1.8
		1/10Al	dE=3.1

Heat Stability

10' - 150 °C	5
10' - 210 °C	5

assessment according to the Gray Scale (1-5)

TOYOCOLOR CO., LTD.

Kyobashi EDOGRAND Bldg., 2-1, Kyobashi 2-chome, Chuo-ku, Tokyo, 104-8381
JAPAN Tel +81 3 3272 3443 Fax +81 3 3272 3447 www.toyo-color.com

TOYOCOLOR

For a Vibrant World

TOYO IN < GROUP