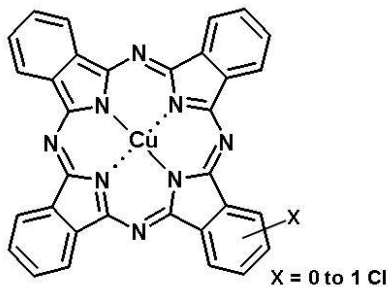


# LIONOL BLUE CB7801



Chemical structure

<b>Chemical Group :</b>	Phthalocyanine
<b>Colour Index :</b>	PB15:1
<b>C.I. Number :</b>	74160
<b>CAS Number :</b>	147-14-8
<b>EC Number :</b>	205-685-1

## Registration

MITI (Japan)	5-3300
TSCA (USA)	Registered

## Application

Rubber	◎
PVC	◎
LDPE	◎
HDPE / PP	◎
PS / PC / ABS	○
Fiber	◎

◎ Recommended    ○ Suitable

Note : The information herein and materials supplied to user is based on our general experience and where applicable, on the results of tests of typical manufacture. However, because of many factors which are outside our knowledge and control which can affect the use of these products, we decline liability for any injury, loss or damage resulting from reliance upon such information.

## Colour Chart



## Key Properties

An alpha form phthalocyanine blue pigment with high colour strength, good dispersibility, and good migration property. Suitable for sheet and fiber application.

## Physical Properties

Bulk density (Kg/l)	0.11
Specific surface area (m <sup>2</sup> /g)	64

## **Fastness Properties**

### Chemical Resistance

Water	5
Xylene	5
Ethanol	5
Ethyl Acetate	5
Mineral Spirit	5
Acid (HCl 2%)	5
Alkali (NaOH 2%)	5

Resistance to Solvent: 1 to 5, 5 = Excellent  
Acid & Alkali Resistance: 1 to 5, 5 = Excellent

### Light Fastness

Full shade	8
Reduced -1/10TiO <sub>2</sub>	8

assessment according to the Wool Scale (1-8)

### Heat Resistance

240 °C

**TOYOCOLOR CO., LTD.**

Kyobashi EDOGRAND Bldg., 2-1, Kyobashi 2-chome, Chuo-ku, Tokyo, 104-8381  
JAPAN Tel +81 3 3272 3443 Fax +81 3 3272 3447 www.toyo-color.com

**TOYO COLOR**

For a Vibrant World

TOYO IN < GROUP