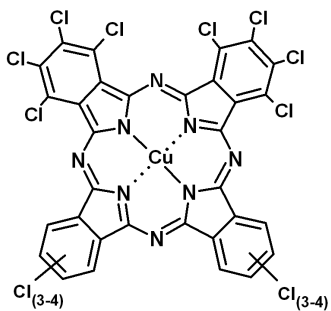


# LIONOL GREEN 8390



Chemical structure

## Colour Chart



## Key Properties

A Pigment Green 7 type pigment with a bluish shade.

<b>Chemical Group :</b>	Phthalocyanine
<b>Colour Index :</b>	PG7
<b>C.I. Number :</b>	74260
<b>CAS Number :</b>	1328-53-6
<b>EC Number :</b>	215-524-7

## Physical Properties

Bulk density (Kg/l)  
Specific surface area (m<sup>2</sup>/g)

## Registration

MITI (Japan)	5-3315
TSCA (USA)	Registered

## Application

Automotive solvent	
Automotive water	
Industrial solvent	○
Decorative solvent	○
Decorative water	○
Powder coatings	⊙

⊙ Recommended      ○ Suitable

## Fastness Properties

### Chemical Resistance

Water	5
Xylene	5
Ethanol	5
Ethyl Acetate	5
Acid (HCl 2%)	5
Mineral Spirit	5
Alkali (NaOH 2%)	5

resistance to solvent, acid & alkali: 1 to 5, 5 = Excellent

### Light Fastness

Full shade	8
Reduced -1/10TiO <sub>2</sub>	8

assessment according to the Wool Scale (1-8)

### Weatherability

Solid	Full	dE=
	1/10TiO <sub>2</sub>	dE=
Metallics		dE=
		dE=

### Heat Stability

10' - 150 °C	5
10' - 210 °C	5

assessment according to the Gray Scale (1-5)

Note : The information herein and materials supplied to user is based on our general experience and where applicable, on the results of tests of typical manufacture. However, because of many factors which are outside our knowledge and control which can affect the use of these products, we decline liability for any injury, loss or damage resulting from reliance upon such information.

TOYOCOLOR CO., LTD.

Kyobashi EDOGRAND Bldg., 2-1, Kyobashi 2-chome, Chuo-ku, Tokyo, 104-8381  
JAPAN Tel +81 3 3272 3443 Fax +81 3 3272 3447 www.toyo-color.com

TOYOCOLOR

For a Vibrant World

TOYOINKGROUP